

SmartWeight® Pro

Intuitive balancer with professional features



Key features at a glance

PATENT PENDING

No-touch wheel measurement



- ✓ Ergonomic design
- ✓ More durable than Dataset® arms
- ✓ Full wheel measurement without contact

PATENTED

SmartWeight® technology



- ✓ Improves balance
- ✓ Minimizes weight usage
- ✓ Maximizes productivity

STANDARD

Intuitive interface



- ✓ Single-knob navigation simplifies experience
- ✓ 3D graphics





STANDARD, PATENT PENDING

ExactPosition™



- ✓ Laser exactly identifies weight location
- ✓ Improves balance accuracy
- ✓ More durable than Dataset® arms

PATENTED

CenteringCheck®



- ✓ Ensures proper centering
- ✓ Eliminates setup errors and most common cause of comebacks

OPTIONAL

HammerHead® option



- ✓ Speeds clip-weight placement
- ✓ Improves balance
- ✓ Illuminates work area

EXCLUSIVE

On-demand videos



- ✓ Simplifies training
- ✓ Improves results
- ✓ Multiple languages



SWP70 shown with optional BullsEye® collet kit, HammerHead® top-dead-center laser, and wheel lift



EXCLUSIVE

Space-saving design

- ✓ Small-format maximizes shop space
- ✓ Hood design allows machine to be installed against wall



No-touch measurement makes balancing easier

STANDARD, PATENT PENDING

Easily determine weight placement using laser vision system

- ✓ Simple dimension entry
- ✓ Automatic weight mode selection
- ✓ Indicates exact weight placement
- ✓ Eliminates most common cause of weight-chasing



OPTIONAL (INCLUDED WITH HOOD)

Outer laser vision system

- ✓ Automatically measure wheel width as hood is lowered
- ✓ Improves balance accuracy



Achieve the best balance with SmartWeight®

Save time & effort

- ✓ Single-weight solutions as much as **60% of the time**.
- ✓ Saves labor versus traditional two-weight solutions

Accommodate many wheel types

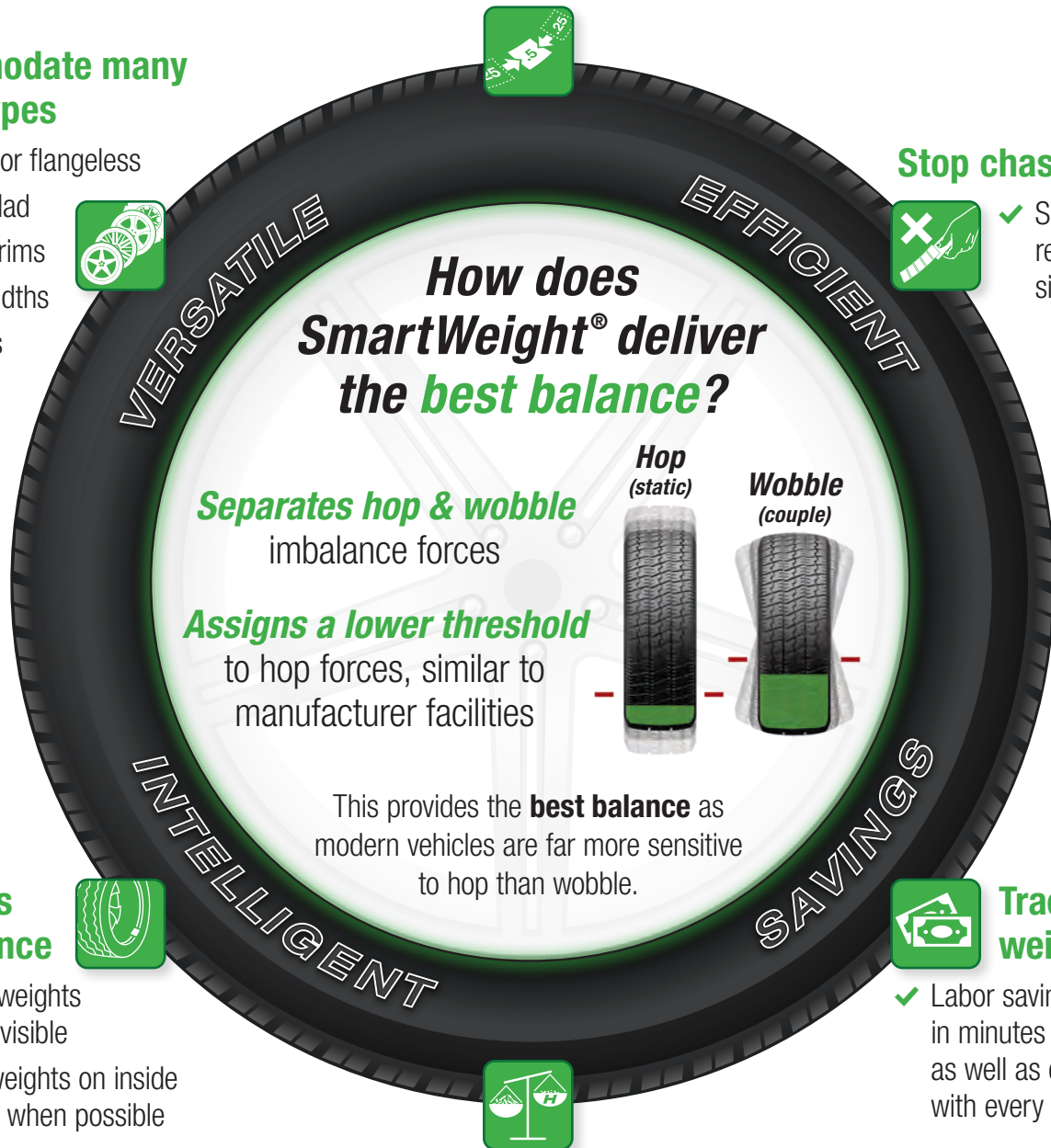
- ✓ Flanged or flangeless
- ✓ Plastic clad
- ✓ Colored rims
- ✓ Wider widths
- ✓ Run flats



Stop chasing weights



- ✓ Superior balance results in a single spin



Improves appearance



- ✓ Smaller weights are less visible
- ✓ Places weights on inside of wheel when possible



Track labor & weight savings

- ✓ Labor savings shown in minutes and hours as well as dollars with every spin.

Reduce weight usage

- ✓ **30% less weight used**
- ✓ Save money on every balance



Did you know?

Modern vehicles are approximately 4 times more sensitive to hop forces than wobble. Conventional balancers treat both the same.

EXCLUSIVE

Single-knob interface simplifies experience

0.75oz

Clearly indicates correction weight amount

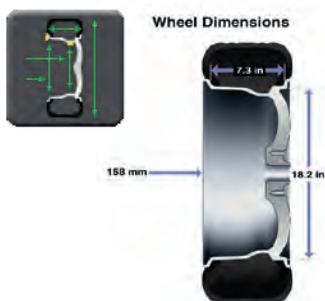


Rim cutaway displays selected weight mode

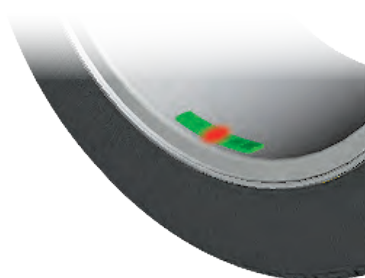


Switch text language

Balancing interface at a glance



Display rim dimensions



TruWeight® provides lifelike representations of actual correction weights



SmartWeight® panel displays wheel balance condition

Popular equipment upgrades

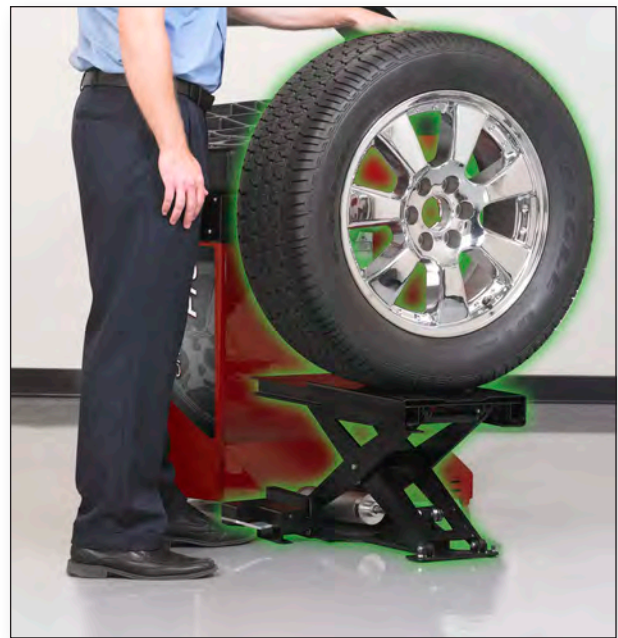
SpeedClamp

- ✓ Faster operation
- ✓ Consistent clamping force
- ✓ More efficient balancing



Wheel lift

- ✓ Safely service heavy, oversized wheels
- ✓ Aids wheel centering
- ✓ Helps retain techs



PATENTED

HammerHead® top-dead-center laser

- ✓ Greater weight placement accuracy
- ✓ More single-spin balances improve productivity
- ✓ Overhead light illuminates work area

BullsEye® centering system

- ✓ Optimize centering
- ✓ Prevent wheel damage



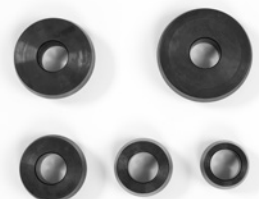
Ergonomic QuickNut

- ✓ Fast clamping with collapsing jaws
- ✓ Comfort-grip handles



Basic collet kit

- ✓ Handles most common wheel sizes
- ✓ Prevent wheel damage



Specifications

Power requirements 196-256V, 3 amp, 50/60 Hz, 1 ph
(Power cable includes:
NEMA 20 amp plug, L6-20P)

Air supply requirements* 100-175 psi (7-12 bar)

Capacity

Rim width	1.5 – 20 in. (38 – 508 mm)
Rim diameter	10 – 30 in. (254 – 762 mm)**
ALU	7.5 – 38 in. (191 – 965 mm)**
Max. tire diameter	38 in. (965 mm)
Max. tire width	20 in. (508 mm)
Max. tire weight	135 lbs. (61 kg)

Imbalance resolution ± 0.05 oz (1.0 g)

Placement accuracy 512 positions, ± 0.35°

Balancing speed 150 rpm

Motor Programmable drive system and DC motor

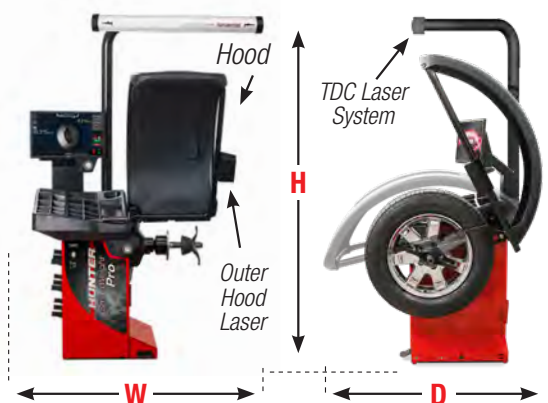
* Wheel lift and SpeedClamp models only. ** Extreme wheel sizes may require manual data entry.



SWP70
shown with
optional BullsEye®
collet kit

Models

	SWP98	SWP97	SWP96	SWP90	SWP78	SWP77	SWP76	SWP70	SWP08	SWP07	SWP06	SWP00
Hood with Outer Laser	✓	✓	✓	✓	✓	✓	✓	✓				
SpeedClamp	✓	✓	✓	✓								
Wheel Lift	✓		✓		✓		✓		✓		✓	
TDC Laser	✓	✓			✓	✓			✓	✓		
Width (W)	60.5 in. (1536 mm)	57 in. (1448 mm)	60.5 in. (1536 mm)	53 in. (1346 mm)	60.5 in. (1536 mm)	57 in. (1448 mm)	60.5 in. (1536 mm)	53 in. (1346 mm)	60.5 in. (1536 mm)	57 in. (1448 mm)	60.5 in. (1536 mm)	42 in. (1066 mm)
Height (H)	85 in. (2159 mm)	85 in. (2159 mm)	71.5 in. (1816 mm)	71.5 in. (1816 mm)	85 in. (2159 mm)	85 in. (2159 mm)	71.5 in. (1816 mm)	71.5 in. (1816 mm)	85 in. (2159 mm)	85 in. (2159 mm)	71.5 in. (1816 mm)	61 in. (1549 mm)
Depth (D)	32.75 in. (832 mm)	32.75 in. (832 mm)	32.75 in. (832 mm)	32.75 in. (832 mm)	32.75 in. (832 mm)	32.75 in. (832 mm)	32.75 in. (832 mm)	32.75 in. (832 mm)	28 in. (711 mm)	28 in. (711 mm)	32.75 in. (832 mm)	28 in. (711 mm)
Weight	465 lbs. (210 kg)	336 lbs. (166 kg)	410 lbs. (186 kg)	311 lbs. (141 kg)	465 lbs. (210 kg)	336 lbs. (166 kg)	410 lbs. (186 kg)	311 lbs. (141 kg)	406 lbs. (184 kg)	343 lbs. (156 kg)	387 lbs. (176 kg)	288 lbs. (131 kg)



Optional equipment

- 20-3062-1** Basic collet kit
- 20-2747-1** BullsEye® collet kit
- 76-574-2** Ergonomic QuickNut
- 20-1839-1** Flange plate
- 20-3600-1** 110V Power Kit



HUNTER
Engineering Company

www.hunter.com

0123FH

Copyright © 2023, Hunter Engineering Company.

Because of continuing technological advancements, specifications, models and options are subject to change without notice.

SmartWeight, BullsEye, HammerHead, CenteringCheck, DataSet and TruWeight are registered trademarks of Hunter Engineering Company.

Form BB07463-00, 01/23
Supersedes Form BB07463-00, 01/22